

THE SWAN
AT
GREAT KIMBLE
FREE HOUSE
(as featured in the CAMRA
good beer guide 2023)
01844 275288
CAMRA – we're in it

Cllr. Clive Harriss
Cllr. Clive Harriss, Icknield
Ward Wycombe District
Council
Bracken House,
Risborough Road Little
Kimble, HP17 0UE
Home Tel: 01296 614913
Day Time Tel: 020 8423
2130
Mobile Tel: 07768 876568
For a quick response do
use
cliveharriss@thomasclive.co.uk

Pilates
at
**The Stewart Hall
Little Kimble**
There is a class on
Tuesdays at 10.30 am
and on
Wednesdays at 5 pm.
All levels are welcome.

Contact Kay
07962.172906
for further information

**Whist Drives
March !!th
&
March 25th**
All welcome to these friendly
evenings,
7.30pm
in The Stewart Hall
Little Kimble
Mary Tate
01296 612481

**The Stewart Hall
Station Road, Little Kimble**
is available for hire for
regular bookings or one-off
events: ample parking, Large
Hall, Small Meeting Room,
Stage, Kitchen
Booking Secretary
07527 595813
Kimblestewarthall@gmail.com

The Management Committee
would welcome new
members to help with the
mangement of this important
parish facility

**THE LITTLE GREEN BUS
HAIL AND RIDE SERVICE TO
PRINCES RISBOROUGH**
FROM THE KIMBLES AND
ELLESBOROUGH
MONDAY, THURSDAY
AND SATURDAY MORNINGS
www.racb.co.uk
for full timetable details

Your Local Beautician,
Specialising in Gel polish, Manicures
& Pedicures and Classic Lash
Extensions
Running from a home salon serving
Great Kimble and surrounding areas,
since 2017
Loyalty cards/Discounts and Gift
Vouchers available
Please call me for a consultation
Corrine Tomes 07879 665451

**Local Police Matters in the
Risborough Area** For information and
advice about crime prevention, please
visit: www.thamesvalley.police.uk
**Princes Risborough & Hughenden
Neighbourhood Police Team**
Princesrisboroughnhpt2@thamesvalley.pnn.police.uk

AV Transport
Specialist Antique Carriers
Removals and Storage
01844 342618
07768 574446

**GWEN'S
CHARITY PLANT STALL**
If you haven't done so before, do
pop down to see the ever-
changing variety of plants, outside
Haylands, Kimblewick Road.
Thank you so much to all of you
who buy from me, and of course,
a special thank you to all who
have so generously donated
plants, chutneys etc. All monies
go to Cancer Research and the
Florence Nightingale Hospice.
Currently I have a good selection
of spring plants-primroses,
primulas, snowdrops, narcissus,
pansies and violas, and probably
more.
Thank you again, Gwen Nicosia

Can You Help?
We need someone to
deliver this Newsletter
to the residents of
Bridge Street. It is
once a month (not
August or January)

Kimble Bell Ringers
If you are a bell ringer,
would you be interested in
joining the bell ringing team?
If so, please
contact john@boxx.org.uk

Your Parish Newsletter relies
on volunteers delivering to all
homes in the Parish. If you have
some spare time to help deliver
the newsletter do let the editor
know.

*The Newsletter is produced &
delivered by volunteers.
Advertising, along with the
welcome donations, helps
defray costs. Editor: Sue
Howgate, 01844 344680 Copy
deadline 20th of each month
h.howgate167@btinternet.com*

**GREAT AND LITTLE
KIMBLE cum MARSH
NEWSLETTER
No 551
March 2024**

**ST NICHOLAS' CHURCH
GREAT KIMBLE
&
ALL SAINTS' CHURCH
LITTLE KIMBLE
Churchwarden
Matthew Halton
matthew.halton@outlook.com
07764 794316
Deputy Churchwarden
Julia Northway
julianorthway@btinternet.com
07979 520045

[www.facebook.com/St
NicholasGreatKimble/](http://www.facebook.com/StNicholasGreatKimble/)**

**St Nicholas' Church
Great Kimble
Services**
*
3rd March
9.15am
St Nic's Café Church
*
10th March
10am
Morning Worship
*
17th March
9.15am
St Nic's Kids
*
24th March
10am
Informal Communion
*
25th, 26th, 27th March

7pm Compline
*
28th March
8pm
Maunday Thursday
Communion
*
**31st March 10am
Easter Sunday Service**

**Everyone welcome at
St Nic's Kids**

Sunday 17th March
St Nicholas' Church
Doors Open 9.15
Coffee and Pastries and Sunday
Newspapers for the adults
Activities and crafts and face
painting for the children
Before a fun, relevant and short
All Age Service along with the
Great Kimble School choir

Everyone welcome,
we'd love to see you there!!

From the team who bring you St
Nic's Kids.....
St Nic's Cafe Church
We're thinking about this
question...Is there more to Life
than this?

This is a new informal church
service for adults starting with
breakfast (we're talking bacon
sandwiches, great coffee and
pastries!) in St Nicholas' Church.
Whilst the adults are in church,
fun and safe childcare provided
for 0-12-year-old children, by an
experienced team in Great Kimble
School Hall from 9.10am.
Everyone welcome!
No need to pre-register your
children but any questions or if
you'd like to pre-register your
children before the day please
call
Barbara on 01844 274221

**WEDNESDAY WORSHIP
9am
Wednesdays
6th, 13th, 20th & 27th March
St Nicholas' Church**
Enjoy coffee and a short
Act of Worship
All are welcome.

Come & See
Are you looking for love? This
Lent, Come and See how God
calls each of us into a deep
relationship with Him, and how
this love teaches us to love others
well.

Explore the Way of Love taking a
closer look at the Commandments
and what they mean in the context of
God's love for us.
There are two ways you can partake
in this informal discussion;
Find out more
at oxford.anglican.org/come-and-see
You can also join a small group of
us on a Wednesday morning at 9am
at St Nicholas' Church, Great Kimble.
For more information, contact Estelle
at estellef@hotmail.co.uk or 07768
327910.

Save the Date
Saturday 13th April
Tabletop Sale
Bric-a Brac and Books Enjoy
chat and refreshments.
in the Stewart Hall

Pastoral Care
It is the aim and the privilege of the
Pastoral Team to visit sick,
bereaved, lonely or house-bound
members of the community. We
are also happy to assist with
transport for those who are in need
of it. Do get in touch if you know of
anyone who would value a visit and
the support of the team, it is often
the only way we get to hear of their
needs. For further information
contact:
Julia Northway 01844 342112

**VILLAGE
COFFEE MORNING**
at
The Swan, Great Kimble
Takes place on the
First Friday of each month
from 10.30am
Do come along on March 1st
Kimble Knitters will be there,
with a selection of hand
knitted Easter novelty items.
These will be on sale, with all
proceeds going to
Scannappeal.

Connect.....

Some of us from Great and Little Kimble cum Marsh have got together and set up a WhatsApp group. It provides a place to share local news, talk to and look out for each other and contact neighbours for support. Delia and Harvey moderate the chat if needed but are not in charge, just aiming to provide a useful facility for the community. If you would like to join in please contact Delia - dburton@kimblecouncil.org.uk or Harvey - halison@kimblecouncil.org.uk with your number. We look forward to welcoming you.

**Just Worship
at Kimble Free Church
Grove Lane
First Friday of the month
6pm - 7pm
An hour of worship songs –
the perfect way to enter the
weekend burden free and
refreshed.**

**Little Kimble Free Church
The Soup Place
Every Wednesday
12 noon - 2pm
In the
Kimble Free Church Hall
*
Craft Café
10am -12 noon 2nd
Wednesday of the month
*
T4U
10.30 -12noon
3rd Wednesday of each month
(usually with a speaker from
a charity & Tea and Coffee)**

Hayfield Build, Little Kimble
For any queries about the Hayfield Build Please contact the Site Manager Matt Phillips on mphillips@hayfield.co.uk

Chiltern Ladies

Would like to welcome new members to a Ladies Club held in the Stewart Hall Little Kimble HP17 0XN Meetings are held on the first Wednesday of each month starting at 2pm. We are a group of ladies who enjoy meeting once a month. We have speakers on a variety of subjects and have outings to places of interest, some by our own transport and some by coach. We also enjoy a cup of tea and a biscuit (or cake) Please come and see if you would like to join us.

VIOLIN, VIOLA & CELLO Players – We need you!!

Senior Strings Club is seeking Violin, Viola and Cello players who have started learning (perhaps in their younger years, or during the Covid lockdown!) and would like to return to playing and continue learning their instrument in a very supportive and friendly group. Whatever level you are, we have music for you!

Why not come along and meet us?

The music we play is varied and exciting – from Bach to Beatles and beyond! All the music is arranged for your standard, and you are encouraged to learn to improve on your instrument over the course of your membership. No patronising tutor books here, we learn REAL music together.

Give us a go, come along and find out what it's all about.

**Mondays 1.30pm for an hour.
In The Stewart Hall**
To arrange a free trial or a visit to us, Email seniorstrings@hotmail.com

**The Swan Quiz League
Every first
Wednesday of the month
7pm – 10pm
Teams of 6 max
£5 per team member
Half time curry/chilli**

Kimble & Ellesborough Horticultural Society



**Monthly meetings are held at
Stewart Hall starting at 8pm.
If you are not a member but
would be interested in coming
to any meetings do contact
Brian Butler (Chairman)
butler@care4free.net or call him
on 01844 342220. Please see
our website for any updates.**

**Tuesday 5th March
AGM 7 15 pm
Plants for Shade and Woodland
8 00 pm**

Timothy Walker, former Director at Oxford University Botanic Gardens and now lecturer in Plant Sciences at Somerville College, Oxford, is always a very informative and entertaining speaker. Most gardens have somewhere that the sun does not shine for some, or all, of the day. This talk looks at which plants can be grown in the five different types of shade in a variety of different soils such as dry or damp. All the plants are suitable for a small garden. It also looks at the woodlands around the world that have given us so many good garden plants.

**Spring Show
7th April**

In the Stewart Hall

If you would like more information, do contact Charlie Taylor, Membership Secretary, at kehs.bucks@outlook.com or ask any Committee member at one of the meetings. You can also visit our website for further details. www.bucksvoice.net/kehs

**Do check out the
Parish Council Web Site
www.kimblecouncil.org
to contact the Parish Council
clerk@kimblecouncil.org**

**Crash-200.com Ltd
Aylesbury's Computer
Services Company**
Based in Bishopstone
Sales, Repairs, Upgrades,
software, Support, Internet,
Office 365, QuickBooks;
Backup, Servers, Virus
removal,
Broadband Web Hosting,
Email Service, IP Telephones,
Office Moves
01296 823009
mark@crash-2000.com
www.crash-2000.com

BROOKSIDE BICYCLES

Bike repairs, servicing &
upgrades
in Little Kimble

Fully equipped workshop
Cytech-certified technician
No job too small or too large,
from fixing a puncture to full
bike builds for:
Road bikes | CX bikes
Mountain bikes | Children's bikes

Contact Rob:

brooksidebicycles@aol.com
07759 885853



Great and Little Kimble cum Marsh PARISH COUNCIL

The Parish Council meets in the committee room of the Stewart Hall on the second Wednesday of each month at 7.30pm, apart from May, when the start time is 7pm.

The Parish Council are always willing to consider community projects and welcome any ideas from parish residents. Contact the clerk - clerk@kimblecouncil.org
Litter Picking. The Parish Council employs Sunnyside Rural Trust to litter pick around the Parish. This is a lovely and

very worthy charity, which supports adults with special needs in supervised employment. They currently come once a month, but the Parish Council have agreed to see if they are available to come twice a month. If any resident has the time and would like to litter pick, the Parish Council provide the litter pick forks and the purple litter pick bags, which will be collected free of charge from any roadside location. Contact the clerk clerk@kimblecouncil.org if you would like litter picking equipment.

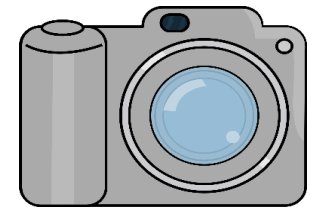


Photo Competition

Great and Little Kimble cum Marsh Parish Council are running a photo competition and are looking for residents to showcase their amazing photography skills. We are looking for photos of our beautiful Parish in Spring 2024, whether it be the beautiful scenery or a landmark.

Photos should be taken between 15th March and 15th April 2024. Competition is open to all ages but please do read the below rules. All entries will be displayed on the Parish Council Website

Entries should be submitted to clerk@kimblecouncil.org 15th March and 15th April 2024
1st Prize £250, 2nd Prize £100, 3rd Prize £50

Rules:

1. Submissions must be emailed to clerk@kimblecouncil.org by the deadline of 15th April 2024
2. You may submit as many entries as you wish however, the photo must have been taken by the entrant and must not contain any materials owned or controlled by a third party.
3. Please provide a description for your photo i.e., where it was taken.
4. Photos must not be enhanced in any way it must be the original photo.
5. Participants of all ages are welcome.
6. By entering the competition, the entrant agrees that the council may use the image for any purpose in the future.
7. All entries may be displayed on the Parish Council website and social media. Please state when submitting your entry whether you are happy for your name to also be displayed.
8. All photos must have been taken within the boundaries of Great and Little Kimble cum Marsh.
9. All participants must live within the Parish of Great and Little Kimble cum Marsh.

Judging:

1. Great and Little Kimble cum Marsh Parish Councillors will judge the entries and the judge's decision will be final and binding.
2. The winner will be announced at the Parish Council meeting on 10th April 2024

The Prizes:

1. The following prizes will be allocated following the judge's decision: 1st Prize: £250, 2nd Prize: £100 and 3rd Prize: £50

Kimble's Journey
Read about
Kimble's History and its place
in English History in.....
Kimble's Journey
www.kimblesjourney.uk
Interested in the history of our parish and other tales of the area, including Chequers, then you will enjoy Kimble's Journey researched and written by local historian, Roger Howgate. In some 272 pages and 400 illustrations the book tells the history of England from the viewpoint of our rural parish. Available from:
rhowgate@yahoo.com
01844 344680 & The Swan Pub, Cymbeline – Princes Risborough £12 each if you collect- £20 by post (**profits from the sale of the book are shared among village charities**)

YARN WANTED BY KIMBLE KNITTERS .

If anyone has any unwanted wool, we would love to receive it. We knit for several local charities, mainly Scannappeal. Any amount is acceptable, from oddments to larger amounts. We will use it all. Please telephone Gwen on 07801 562535. Can collect. Thanks in advance.